

122'

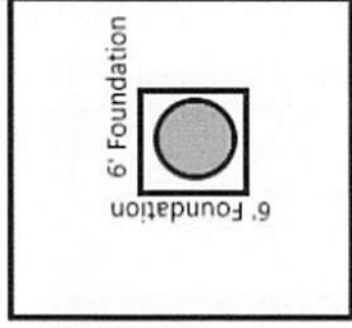
Distance between buildings 31'

57'



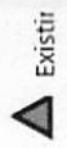
7.5'

20' Fence

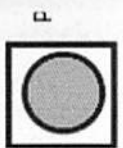


20' Fence

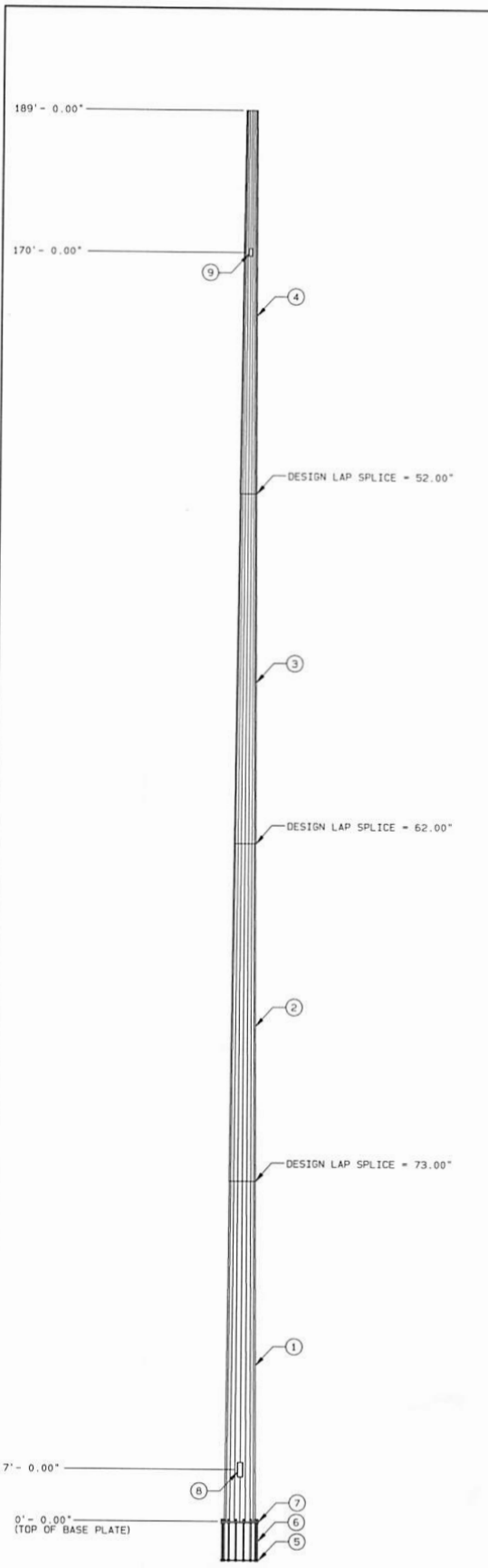
29'



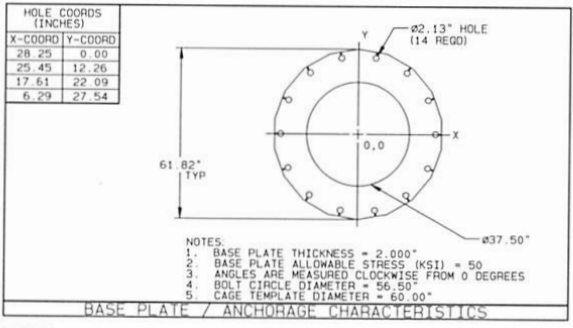
Existir



P



ITEM ID	NO. REQD	FEATURES	UNIT	WEIGHT (LBS)
1	1	SECTION A VALMONT 5-22 0.313" THK (A572 GR65)	7,852	7,852
2	1	SECTION B VALMONT 5-22 0.250" THK (A572 GR65)	5,107	5,107
3	1	SECTION C VALMONT 5-22 0.250" THK (A572 GR65)	4,146	4,146
4	1	SECTION D VALMONT 5-22 0.219" THK (A572 GR65)	2,691	2,691
5	1	BOTTOM CAGE PLATE	117	117
6	14	1.75" ANCHOR BOLT, LENGTH=5.50" A615 GR75	64	896
7	1	BASE PLATE VALMONT 5-56 2.000" THK (A572 GR50)	1,251	1,251
8	1	TOP CAGE PLATE (REMOVE BEFORE SETTING POLE)	152	152
9	1	SAFETY CLIMBING CABLE (LENGTH = 179.00')	124	124
	3	GROUNDING LUG	2	6
		GALVANIZING	529	529
189		STEP AND CLIP (VALMONT STANDARD)	1	189
8	1	HAND HOLE HWY (8" x 24") @ 0°	52	52
9	3	HAND HOLE STD (6" x 12") @ 0°, 120°, 240°	11	33
	1	POLE CAP	18	18



- BASE PLATE / ANCHORAGE CHARACTERISTICS**
- NOTES:**
- FACTORED BASE REACTIONS:
MOMENT = 19,143 IN-KIPS
SHEAR = 15,411 #
VERTICAL = 27,168 #
 - GALVANIZED PER ASTM A-123
 - DESIGN CRITERIA: ANSI/TIA 222-H
 - THIS STRUCTURE HAS BEEN DESIGNED FOR THE FOLLOWING LOADING:
EXPOSURE CATEGORY = C
TOPOGRAPHY CATEGORY = 1
RISK CATEGORY = 2
SITE ELEVATION = 876 FT
EARTHQUAKE SPECTRAL RESPONSE ACCELERATION AT SHORT PERIODS $S_0 = 0.14$
EARTHQUAKE SPECTRAL RESPONSE ACCELERATION AT ONE SECOND $S_1 = 0.07$
EARTHQUAKE SITE CLASS = 0
WIND LOAD CASES ARE BASED ON 3 SECOND GUST AND 700 YEAR MRI
A. CASE 1: WIND = 114 MPH WIND SPEED
B. CASE 2: WIND = 40 MPH ICE AND WIND SPEED
DESIGN ICE THICKNESS = 2.00 INCH
C. CASE 3: WIND = 60 MPH WIND SPEED
D. CASE 4: SEISMIC
E. CASE 5: SEISMIC
F. EQUIPMENT
- | DESCRIPTION | ABP MTG HT (FT) | ABP CENTROID HT (FT) | WITHOUT ICE EPA WT (FT**2) (LBS) | WITH ICE EPA WT (FT**2) (LBS) |
|---------------------|-----------------|----------------------|----------------------------------|-------------------------------|
| 1-4FT LIGHTNING ROD | 189.00 | 191.00 | 0.25 | 10 |
| 6-C007-08 | 174.00 | 179.00 | 13.68 | 144 |
| 6-SP1 PSA6 | 174.00 | 174.00 | 33.84 | 1098 |
- FEEDLINES ARE PLACED INTERIOR TO POLE SHAFT (UNLESS NOTED OTHERWISE).
 - TOTAL POLE HEIGHT IS 190 FT AGL.
 - ELEVATIONS ARE MEASURED FROM TOP OF BASE PLATE (APPROX. 1 FT AGL).
 - 18 SIDED SHAFT
 - POLE DESIGNED TO INCLUDE 100% GROWTH (DOUBLE REQUESTED LOADING).
 - POLE DESIGN ALSO MEETS TIA REV G.

SECTION INFORMATION					
ITEM ID	LENGTH	BASE OD	TOP OD	THK	MATL
1	51' - 9.00"	50.00"	40.84"	0.313"	A572 65 KSI
2	50' - 4.00"	42.42"	33.52"	0.250"	A572 65 KSI
3	51' - 2.00"	34.93"	25.88"	0.250"	A572 65 KSI
4	51' - 4.00"	27.08"	18.00"	0.219"	A572 65 KSI

ORDER	PROJECT	FILE ID	SCALE	DATE	ENGR
	522674	522674-01	NONE	07/02/21	NAR1
DESCRIPTION					
MOTOROLA 189.0' POLE, [REDACTED]					

