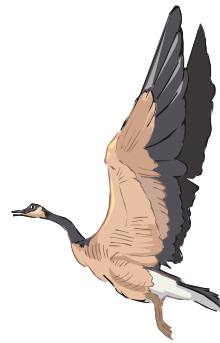


## Welcome to Island Park!

### Enjoy:

- Walking the self-guided, 3/4 mile, barked nature trail
- Learning about indigenous plants and animals (Nature pamphlets are located in rack at entrance.)
- Fishing from wooden platforms
- Canoeing and kayaking along the Sanctuary's Blue Heron Water Trail
- Viewing birds and other wildlife
- Exploring the island's diverse ecosystems
- Relaxing on the handicapped-accessible viewing platform



Island Park is open  
to the public during  
daylight hours.

Please leave your bicycles  
and skateboards at home.

Thank you for helping us  
take care of our natural area.

*Take nothing but pictures -  
leave nothing but footprints!*

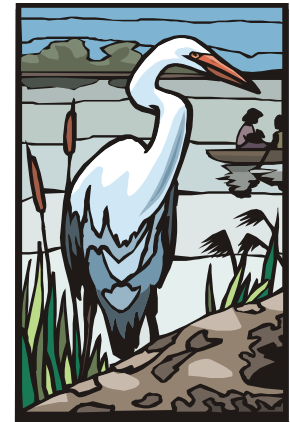
Visit our website at  
[www.alpena.mi.us](http://www.alpena.mi.us)  
to view pictures of the  
Wildlife Sanctuary and  
to learn more about Alpena.



City of Alpena  
Wildlife Sanctuary Board  
208 N. First Avenue Alpena,  
MI 49707

## Explore the Alpena Wildlife Sanctuary's

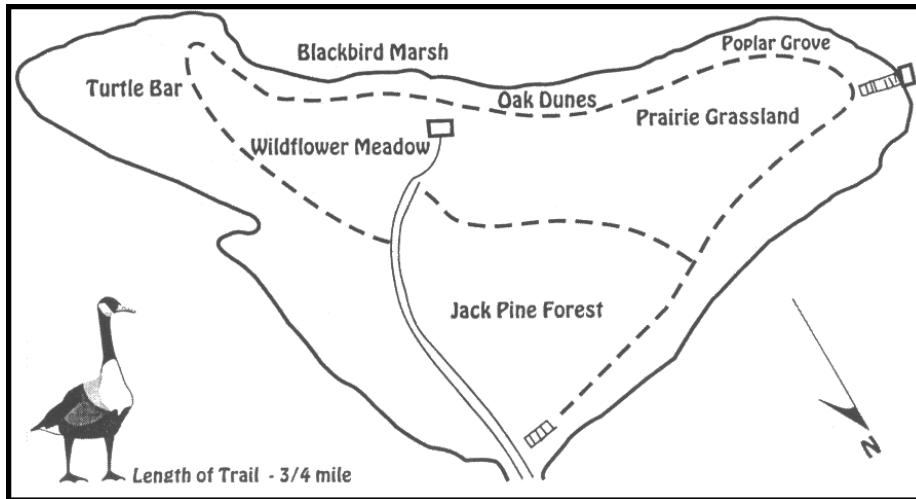
## Island Park



“It’s a place of quiet waters, waving reeds, shaded shores and water lilies...a goose nesting on a muskrat house, mallard ducklings crowding close to mama, a deer watching from behind the tag elders, the slap of a beaver’s tail.”

Local Naturalist, O.B. Eustis

## Island Park



## Indians—The Original Inhabitants

Several archeological sites have been located on the islands and shores of the Sanctuary. Many of the artifacts collected from this area are on exhibit at The Besser Museum for Northeast Michigan. The river, teeming with fish and fowl, was a source of wild game and food plants for the ancient American natives known to live here as early as 5,000 B.C. Alpena's last Indian chief, "Sah-gon-ah-ka-to," lived on the high ground of Island Park. In English, his name means "Thunder Shower Coming" or "Thunder Cloud." He died in 1869 at the age of ninety-three and was originally buried close by...near his birthplace, the "Ox Bow" of the Thunder Bay River.



OJIBWAY

## Birds You Might See

**Mute Swan** (white, orange beak) -

Average Length: 57-62 inches

Average Weight: 20-29 pounds

Average Wingspan: 84-96 inches

**Canada Goose** (black head with white area, brown body) -

Average Length: 16-25 inches

Average Weight: 18 pounds

Average Wingspan: 50-68 inches

**Mallard Duck** (males: green head, gray body; females: brown head and body) -

Average Length: 15-16 inches

Average Weight: 2.7 pounds

Average Wingspan: 36 inches

**Great Blue Heron** (blue-gray color, long legs and neck) -

Average Length: 38 inches

Average Weight: 4-7 pounds

Average Wingspan: 70 inches

Many of the 280 northeastern Michigan species can be seen on the island.

## Alpena Wildlife Sanctuary

